



Port Pirie Regional Art Gallery Incorporated

Annual Report

2014 - 2015

Port Pirie Regional Art Gallery
3 Mary Elie Street (PO Box 481) Port Pirie SA 5540
Ph 08 8633 0681 Fax 08 8633 0672
info@pprag.org www.pprag.org

October 2015

This document has been prepared by the Port Pirie Regional Art Gallery.

Copyright

This publication is copyright. Apart from any use permitted under the *Copyright Act 1968*, no part may be reproduced by any process without prior permission of the Port Pirie Regional Art Gallery. Requests and enquiries concerning reproduction and rights should be directed to the Director, PO Box 481, Port Pirie, SA 5540 or by email info@pprag.org

Disclaimer

The Port Pirie Regional Art Gallery, their employees and their servants do not warrant or make any representation regarding the use or results of use of the information contained herein as to its correctness, accuracy, currency or otherwise. The Port Pirie Regional Art Gallery, their employees and their servants expressly disclaim all liability or responsibility to any person using the information or advice contained herein.

Contents

| | |
|--|----|
| Strategic Plan 2012-15 | 4 |
| Board of Management | 5 |
| Chair's Report | 6 |
| Director's report..... | 7 |
| Strategic Goals and Objectives..... | 9 |
| Goal One: Port Pirie and the Southern Flinders region has a diverse range of quality exhibitions and educational opportunities..... | 10 |
| Goal Two: Existing partnerships are maintained and new partners engaged to ensure the operation of the Gallery into the future..... | 20 |
| Goal Three: The community values the Gallery as a community resource. | 23 |
| Goal Four: Technology enhances the operation and promotion of the Gallery and its services | 25 |
| Goal Five: Staff and Volunteers use their skills and knowledge to achieve the Gallery's purpose | 26 |
| Goal Six: The Gallery has good corporate governance. | 27 |
| Exhibitions held from July 2014 to June 2015..... | 28 |
| Financial Statements for period ending 30 June 2015 | 37 |

Strategic Plan 2012-15

Vision

Bringing art to the people and people to the arts

Mission

To deliver opportunities for the people of the Southern Flinders region to value and understand the importance of art and culture in our community

Goals

Goal One: Port Pirie and the Southern Flinders region has a diverse range of quality exhibitions and educational opportunities

Goal Two: Our community is engaged and has opportunities for involvement in the Gallery

Goal Three: Existing partnerships are maintained and new partners engaged to ensure the operation of the Gallery into the future

Goal Four: The community values the Gallery as a community resource

Goal Five: Technology enhances the operation and promotion of the Gallery and its services

Goal Six: Staff and volunteers use their skills and knowledge to achieve the Gallery's purpose

Goal Seven: The Gallery has good corporate governance

Board of Management

Chairperson

Mike Basley

(Legal & Finance)

Secretary

Veronica Travers

(Education & Youth)

Treasurer

Annette Rimmer

(Finance)

Board Members

Dianne Patterson

(Governance)

Sandra Gurr

(Art & Volunteers)

Ellie Green

(Community & Arts)

Jodie Trimble

(Community)

Ruby Miller

(Arts & Volunteers)

Judy O'Shaughnessy

(Business)

Sue Chivell

(Community)

Volunteers

Lorraine Chapman

Barbara Hall

Ruby Miller

Catherine Couzner

Pauline Place

Graham Chapman

Sandra Gurr

Carol Wood

Jan Pana

Neil Hann

Gallery Staff

Director:

Jenni Frost

Administration:

Lynne Walden

Chair's Report

Michael (Mike) Basley. FAICD. JP.

This has been my first full year as Chair of the Board and I am pleased to present this annual report as it gave me the opportunity to reflect on the many activities of the Gallery during the past year.

This year has been another busy and successful time of exciting and inspirational exhibitions and new activities for involvement of people to enjoy the arts, with significant effort directed towards the accomplishment of the goals of our strategic plan.



Throughout the year, the Gallery has hosted a program of touring exhibitions and quality regional exhibitions that highlight the talents of our local artists and promote community art groups and support our artists. Our exhibition program has delighted and inspired our many visitors, not only from the community of Port Pirie, also the wider region, other parts of Australia and the world.

This year we also held a number of workshops and art activities to encourage people to participate more in art activities. With an Open Studio and a variety of drawing, painting and mosaic workshops, which suited novices, experienced artists or those just wanting to try something new, the range of activities made it easy for people to choose to participate at their own comfortable level.

The Board has enjoyed full membership for most of the year and as a result was able to focus its efforts on its governance role. The Board welcomed its new members, Sandi Gurr and Annette Rimmer our new Treasurer.

The Board also devoted considerable time to the review and update of the gallery Strategic Plan 2015 - 2021. The Board Action Groups worked to review Gallery Policy and completed the development of a new Sponsorship package. Board members have also contributed greatly to the operations of the gallery, with support to paint for the walls of the Vivienne Crisp and the Flinders Galleries. The paint was supplied by Solver and Home Hardware Port Pirie.

On behalf of the Board of Management, I would like to thank our partners, the Port Pirie Regional Council and Country Arts SA for their financial support of the Gallery business. As this was the last year of our 3 year funding agreements, we invested considerable effort in preparing a proposal seeking further agreements with them. While we were successful with a 3 year commitment from the Council, we have sought support of our local member of parliament, Geoff Brock to promote our case for future funding.

I also sincerely thank our sponsors Southern Cross Television, Pisani Group, Jan Pana Graphic Design, and Automatic Print for the important services they provide. The Picture Framer continues to give discounts to Gallery members.

I sincerely thank our wonderful team of volunteers. Their commitment put in by our team of volunteers. They welcome Gallery visitors seven days a week and assist staff with exhibition changeovers, exhibition openings and events. Thank you also to our staff, Gallery Director Jenni Frost and the Admin Officer Lynne Walden.

And I thank all Board members for generously contributing their expertise and time over the year.

Mike Basley

Chair

Director's report



Once again the Port Pirie Regional Art Gallery has delivered an inspired program of exhibitions and arts activities for the community, the region and most importantly exhibitions that support artists and the arts community.

Regional artists have been a highlight in the program of exhibitions. The gallery was privileged to have 'Tough(er) Love' as part of the South Australian Living Artists Festival 2014. Twelve Eyre Peninsular artists presented new work in a touring exhibition developed by Country Arts SA. This exhibition showcased the cultural and geographic diversity of the region.

'Stratum', a multi media installation by Yvonne East also toured with Country Arts SA as part of the 'Breaking Ground' program and in another exhibition eight regional artists resident in the small coastal port of Port Germein and nearby Mid-North towns, the 'Germein Art Focus', exhibited in 'Now and Then', a survey of works celebrating seven years exhibiting as a group.

These exhibitions demonstrated how creative, industrious, inspired and hard working regional artists are. They create great art in isolated and challenging conditions and develop a visual language that is distinct and original.

The Gallery was privileged to have two interstate touring exhibitions of an exceptional standard. 'Warakurna' – *all the stories got into to my mind and eyes* came to us from the National Gallery of Australia, new work from the remote Western Desert and 'Mytho- Poetic' *Print and Assemblage Works* from Queensland artist Glen Skein.

Touring exhibitions give us an insight into what is happening in the arts landscape from around Australia. It exposes us to artwork we would not usually see; they educate and broaden our experience and awareness. They are vital to maintaining diversity and inspiration in our exhibition program. This is well documented by the spontaneous and insightful statements in the visitors' book.

The Port Pirie Art Prize 2014 attracted artists' state and nation wide – there was an increase in entries with 108 works judged by Eleanor Scicchitano, Visual Arts Coordinator for Country Arts SA and Meg Wilson, Co- Director, Feltspace, Adelaide.

With a view to develop the Art Prize as a signature arts event on the regional arts calendar the Art Prize will now be held every two years with a larger prize pool to attract more entries from a wider range of artists. The next Prize will be held in 2016 and we will continue to expand and build on what has been a valued tradition since 1996. As a non acquisitive and biennial prize there is confidence that entries will continue to increase.

Art prizes are integral to established and emerging artists and provide access to the arts market, invite participation and promotion of the visual arts.

From little things big things grow and students from all our education sites, kindergarten to year 12 created an aspirational exhibition of photography – 'A Vision for All' – reflecting the

values of Persistence, Respect, Responsibility and Confidence. There is an ongoing ambition to encourage our schools and the school community to participate in gallery activities and value the role of the Port Pirie Regional Gallery.

To continue the vision of taking arts to the community I programmed 'Get into your Gallery! – GIYG!

Three weeks of art jams, drawing, watercolour and mosaic workshops and an 'open studio' with local artist Neil Hann. We also held a screening of 'After the Fire' - a documentary of the Bangor Bush Fire, a community event to help those affected by the Bangor Fire that threatened the Southern Flinders Ranges for 6 weeks.

Nyrstar, the Port Pirie Smelter saw an opportunity to partner with the art gallery. With funding support for two years from Nyrstar and with the curatorial expertise of Kirstie Jamieson the gallery offered to host two exhibitions from the Smelters extensive archive, one in 2015 and one 2016. 'Families Floods and Furnaces – the story of Port Pirie' was very popular with over 4,000 visitors and coincided with the launch of Andrew Male's book 'Bullion' which told the history of Port Pirie from 1910 – 1934. This exhibition was a great example of community engagement with renewed discovery of local stories, myths and legends for, and of, the community!

Through the year I had the opportunity to attend some exciting events outside the normal routine of gallery operations. They included the 2014 Regional Galleries Association of SA Road Trip, 'Bringing it all Together' – Guidelines for Arts and Mental Health Projects at the Whyalla Public Library, 'Expanding the Horizons' Forum in Adelaide facilitated by Country Arts SA but the most stimulating, educational and expansive was the Fifth National Public Galleries Summit 'The Art of Reinvention' in Bendigo, Victoria.

Attending these events creates a broad vision and reassures us that what we are doing is credible and valuable in our own right.

The cross pollination of ideas and the opportunity to meet the people that face similar challenges and discover how they achieve their successes is of an enormous benefit.

New ideas and perspectives enhance our own vision for the future.

They inspire motivation and optimism for the future of the arts and arts delivery in Port Pirie and our region.

I thank the Board of Management for their support and will endeavour to continue the vision of the Port Pirie Regional Art Gallery – 'taking art to the people and the people to the arts'.

Jenni Frost

Director

Strategic Goals and Objectives

| |
|---|
| Goal One: Port Pirie and the Southern Flinders region has a diverse range of quality exhibitions and educational opportunities |
| Provide the community with experience in a variety of art forms |
| Provide opportunities for young people to engage with the Gallery |
| Goal Two: Our community is engaged and has opportunities for involvement in the Gallery |
| Grow volunteer base |
| Take the Gallery out to the community |
| Ensure a vibrant active Board of Management |
| “Capture” visitors to the arts precinct |
| Build our membership by 10% a year |
| Increase the participation of Gallery members |
| Goal Three: Existing partnerships are maintained and new partners engaged to ensure the operation of the Gallery into the future |
| Build sustainable relationships with key funding providers |
| Source \$30,000 new sponsorship from groups, business and organisations over 3 years |
| Work closely with our partners and sponsors |
| Goal Four: The community values the Gallery as a community resource |
| Actively promote the Gallery’s program and services to ensure community awareness of its role and value |
| Grow visitor numbers |
| Goal Five: Technology enhances the operation and promotion of the Gallery and its services |
| Keep up to date with new media and acquire appropriate technology |
| Goal Six: Staff and volunteers use their skills and knowledge to achieve the Gallery’s purpose |
| Ensure staff can make the best use of their skills and knowledge, and acquire necessary new skills |
| Ensure a robust volunteer group |
| Goal Seven: The Gallery has good corporate governance |
| Sound planning to ensure everyone knows what they need to do |
| Transparent financial record keeping |
| Collection conserved, maintained and well documented |

Goal One: Port Pirie and the Southern Flinders region has a diverse range of quality exhibitions and educational opportunities

Provide the community with experience in a variety of art forms

The Port Pirie Regional Art Gallery has offered to the community a diverse program of quality exhibitions of local, state and national interest that provide opportunities for visitors to experience art work in a variety of mediums that may engage, enhance and broaden the visual arts perspective and appreciation of art and acknowledge contribution arts makes for the health, wellbeing and identity of the community.

In the period July 2014 to June 2015, the Gallery hosted eleven exhibitions showcasing sculpture, textiles painting, glass, collage, printmaking, assemblage and multi media art. Four of the exhibitions included activities targeted to community groups and school art students with workshops and artist talks for wider community participation.

Regional exhibitions

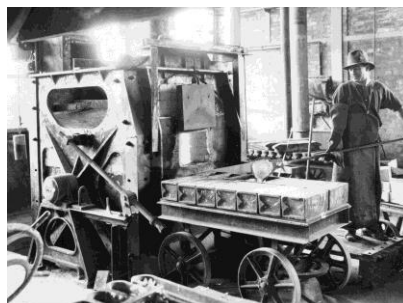
The exhibition program saw collaboration and support from community groups, including the Peterborough Wireworks, Port Pirie Embroiderers Guild, the Port Pirie Education sites and Nyrstar, the Port Pirie smelter.

The Germein Art Focus exhibited 'Now and Then', a survey of work by this local group from the small community of Port Germein.

The Embroiderers Guild of Port Pirie hosted the ever popular 'Gentle Arts' exhibition and Webs of Time Lace exhibition featuring the nationally significant collection of lace by Karen Blum, who was a resident of Port Pirie up until her death in 2013.

In conjunction with the International Congress of Lace which was held in Adelaide, two bus tours from the Congress visited Port Pirie, one of five Lace exhibitions that were held in Adelaide and regional centres as part of the Congress.

Local, state and national talent was on show for the 2014 Port Pirie Art Prize and more talent was showcased with our own annual 'The Members' exhibition.



'Families, Floods and Furnaces'
curated by Kirstie Jamieson and in partnership with Nyrstar, Port Pirie.

5 June – 12 July
2015

Touring exhibitions

The Touring exhibitions are included in the program to give access to exhibitions from major cultural institutions. These exhibitions are accompanied by comprehensive education packs, catalogues, exhibition rationale and opportunities for artist talks.

There were four touring exhibitions. Two were Country Arts SA touring exhibitions; Tough(er) Love and 'Stratum' by Yvonne East as part of the Breaking Ground program. Both featured regional South Australian artists. National touring exhibitions included 'Warkurna – all the stories got into my minds and eyes' new work from the Western Desert from the National Museum of Australia and 'Mytho-Poetic', Glen Skien from the Gympie Regional Gallery.

Visitors

The number of visitors to the Gallery was 14,975, only slightly lower than the previous year of 15,154. There were a higher number of visitors during the Webs of Time, Waste to Wonderful, Port Pirie Art Prize, Germein Art Focus and the Families, Floods and Furnaces exhibitions. With more regular updates of our online presence the Website page views and Likes on our Facebook page continue to increase in number.

Exhibition openings

Official openings were held for several exhibitions during the year. Gallery partners, sponsors, members, exhibition artists and supporters and also the media attended the openings. The Gallery Director and the artists provide background information about the exhibition and the artworks on display.

They included:

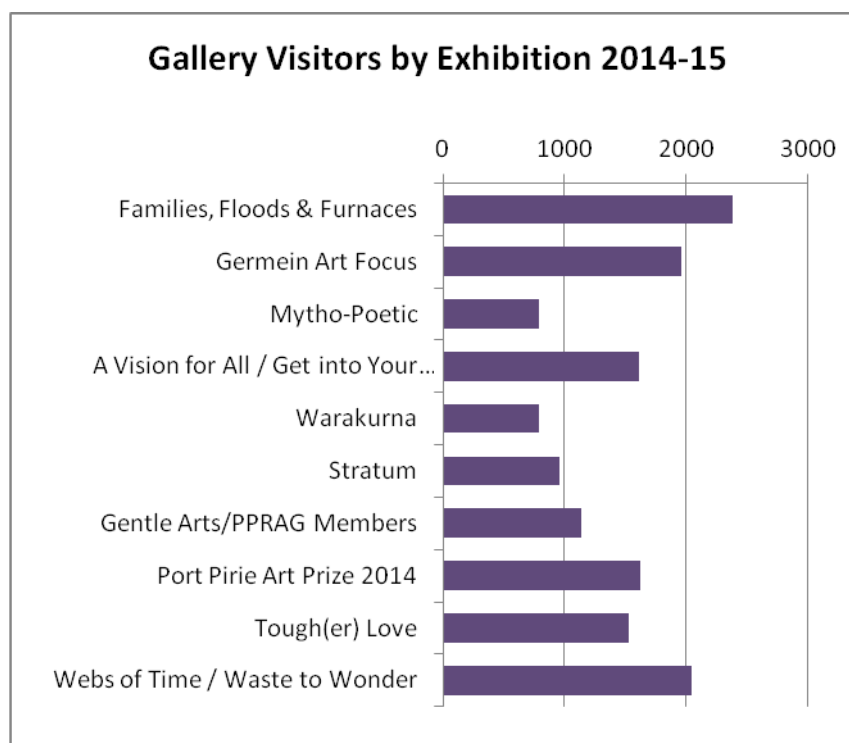
Tough(er) Love, 40 attended

Port Pirie Art Prize, 80 attended

A Vision for All, 100 attended,

Germein Art Focus, 30 attended

Visitors by Exhibition



For exhibition details please refer to Exhibitions Program.

Active Schools Program

Local and regional schools are kept informed about the exhibition program and the educational resources that accompany touring exhibitions.

School groups are invited to attend exhibitions and to access the educational resources that accompany touring exhibitions.

| | 2014-15 | 2013-14 |
|-------------------------------|------------|------------|
| School student numbers | 502 | 537 |

School Group Visits to the Gallery

School groups are invited to attend exhibitions and to access the educational resources that accompany touring exhibitions.

| Date | School | Student Number |
|------------|-------------------|----------------|
| July | N/A | 99 |
| 1/08/2014 | JPSS | 65 |
| August | N/A | 14 |
| 15/09/2014 | PP special School | 6 |
| 19/09/2014 | JPSS | 5 |
| 24/09/2014 | PP special School | 6 |
| 17/10/2014 | JPSS | 6 |
| 9/11/2014 | JPSS | 13 |
| | TOTAL | 214 |

Work experience

Work experience student Whitney Bray from John Pirie Secondary School assisted with the exhibition changeover 8 – 12 September 2014, participating in some way in all aspects of installing an exhibition and working well with staff and volunteers.

Provide opportunities for young people to engage with the Gallery

Each year young people have a number of opportunities to participate in exhibitions at the Gallery. These include:

- *The Port Pirie Art Prize* offers a Youth Encouragement Award to artists 18 years and under.
- *The Clan Rodda Award for an emerging artist to 25 years of age as part of the Port Pirie Art Prize.*
- The aims are to:
 - Reward and encourage students towards excellence in the visual arts;
 - Foster the development of the visual arts in the region;
 - Encourage an arts relationship with the Gallery;
 - Foster careers in the visual arts.

Educational Opportunities and Activities

In addition to the exhibition program, the Gallery offered the community opportunities to participate in many activities and events.

All these activities enhance our vision of bringing art to the people and people to the arts and provide an inspirational and educational exhibition program and a cultural experience of a high standard.

Artist Talks

In addition to the exhibition program, the Gallery provided opportunities for community participation in an artist talk and workshops.

Artist Talk – Tough(er) Love Exhibition

Over 40 people attended the exhibition opening to hear Artist Cindy Durant give a very interesting and engaging floor talk about her art practice and life on the remote Far West Coast of SA near Penong.



Images: Cindy Durant 'Artist Talk'

Mytho-Poetic

Glen Skien has spent a major part of his exhibiting life as a printmaker and creator of objects. He is highly respected in the national printmaking community and the delicacy and sensitivity of his images spark immediate affinity.

29 March. Glen visited the gallery to talk about his art and art practice and he also provided a one day print workshop for senior students at the John Pirie Secondary School.

Workshops – Tough(er) Love Exhibition

Artist Cindy Durant extended her stay to run two workshops - Vitreous Enamel on Metal, on Saturday 2 August and Sunday 3 August. These one day workshops were attended by a total of 13 people. The feedback received has been positive and an encouraging sign to consider more workshops in the future.

The artist talk and the workshops were made possible with a Skills Development Grant from Country Arts SA.



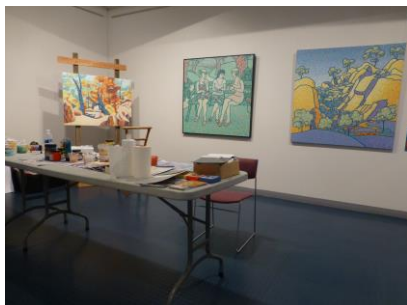
Images: Vitreous Enamel on Metal workshop and finished jewellery

Get into Your Gallery!

30 January to 22 February 2015

Three weeks of art jams, drawing, watercolour and mosaic workshops and an 'open studio'

Open Studio with Port Germein Artist Neil Hann 2 – 6 Feb



Workshops:



Drawing 31 Jan - 1 Feb and 18 - 19 April

Two day drawing workshops with artist Jan Pana use the right hand side of your brain.
10 participants each workshop



Watercolour with Judy
Judy Elliott-Maddison
10 participants



Mosaics with Megs
Mosaics - 19 participants in two workshops.

Adult Art Jam Friday 13 Feb and Friday 15 May



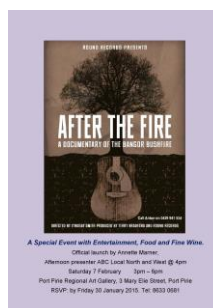
12 people at each Art Jam relaxed, unwound, had fun and created with paint!!

Events:

Launch of Bangor Fire documentary 'After the Fire' Sat 7 Feb.

Directed by Lindsay Smith, produced by Terry Bradford and Round Records and launched by Dr. Annette Marner, afternoon presenter ABC Local North and West.

26 attended



IP and Copyright forum: **'Protect Your Creative Expression'** Wednesday 18 February

A workshop was held on copyright and other intellectual property issues for indigenous and non-indigenous artists presented by Chris Hayward, IP Australia with an opportunity for a one on one consultation with copy right lawyer Stephanie Faulkner. A free workshop offered as part of the 'Warakurna' exhibition from the National Museum of Australia.

Goal Two: Our community is engaged and has opportunities for involvement in the Gallery.

Grow Volunteer Base

The Gallery continues to rely on the valuable contribution of volunteers to staff the Gallery on a regular basis and provide that first point of contact for visitors. Seven volunteers are on a weekly roster and five are on a casual or as needs basis. Following the retirement of three of our long term volunteers, we now have two new volunteers in the Gallery.

| | 2014-15 | 2013-14 |
|----------------------------------|----------|----------|
| New volunteers recruited: | 2 | 2 |

As part of National Volunteer Week we hosted a thank you morning tea for all our volunteers.

Take the Gallery out to the Community

Sun 14 Dec: Rural Women's Gathering afternoon tea – Gallery staff hosted afternoon tea in the Keepsake Garden adjacent the gallery.

27 April: Port Pirie Library Social Seniors visit the gallery with director's talk.



17 June: Tall Tales and True event and morning tea. With Andrew Male, author 'Bullion'- the story of Port Pirie and Kirstie Jamieson curator to bring to life some of the photographs as part of the Families, Floods and Furnaces exhibition.



Residents from Port Pirie Aged Care visit the gallery during the Tough(er) Love exhibition.

Ensure a vibrant active Board of Management

The membership of the Board is skills based and can have up to 10 members. 2014 commenced with a full Board of 10. The skill set includes arts, community, education, governance, marketing and promotion. This year two new members were welcomed, Sandi Gurr and Annette Rimmer as Treasurer, following the resignations of Dylan Smith and Rosalie Bonekamp.

The Board Action Groups work on new and revised policies and the development of new Sponsorship packages.

As part of their role, Board members also attended exhibition openings and events. They are actively involved in the running of events and workshops, assist with catering at special events and have made donations of equipment for workshop and office use. They also gave their time to assist with the painting of the walls of the Vivienne Crisp Gallery.

“Capture” visitors to the art precinct

Signage has been improved at the Galley entrance with posters displayed showing “What's On” and artworks are also hung in the entrance to attract visitors to view the exhibition.

A strengthened relationship with the Tourism staff and volunteers has seen more visitors directed into the Gallery. Gallery news also features in the Cultural Precinct's monthly column that appears in The Recorder newspaper.

Build our membership by 10% a year

Members are the foundation of the Gallery. At the Annual General Meeting, annual membership fees were reviewed and unchanged. Member numbers have increased to 121 at 30 June 2015 from 113 for the previous year.

Increase the participation of Gallery members

All Gallery members are invited to participate in the program of exhibition openings, workshops, artist talks and fundraising events. The exhibition program is sent out in poster form. Where possible Gallery members receive email invites and newsletter which has reduced both postage and printing costs.

Members Exhibition

10 – 27 October 2013

Each year the members have an exhibition of their artwork. It is a unique opportunity for them to exhibit as a group. In 2014 there were 15 participating artists and over 37 artworks on display.

Highlights for local artists:

Number of Artists exhibited or employed from July 2014– June 2015: 118

Highlights for local artists:

- Cedric Varcoe.
 - Prize: 2014 Malka – Aboriginal Art prize - 1st Prize Yarta Purtli Port Augusta
 - Exhibitions:
 - Cedric Varcoe Solo exhibition, Surrey Hills Library
 - 2014 SALA Festival, Better World Arts, Port Adelaide and Kiri Kiri Gallery, Victor Harbor
 - Sales and private commissions: 5
 - Artist in residence: Glenelg Art Gallery during SALA 2014.
 - Community projects:
 - Children in Care, Families SA – painting workshop,
 - Gladstone High School and Airedale Primary School – Naidoc week,
 - Airedale Primary School – storytelling and painting,
 - Community Health Ten x 10 Lead Reduction program Port Pirie – wall mural with Judy Crosby.
- Allen Sparrow - Participated in the 31 Telstra National Aboriginal & Torres Strait islander Art Award, Darwin.
- Neil Hann - Open Studio in the gallery as part of 'Get into Your Gallery'
- Jan Pana – artist facilitating drawing workshops
- Debbie Savage, Weroona Island - artist facilitating adult Art Jams'
- Judy Elliott-Madison, Bangor - artist facilitating watercolour workshops
- Marg Ridge, Port Broughton - artist facilitating mosaic workshops

Artwork sales in the Port Pirie Regional Art Gallery (July 2014 – June 2015): 24
(Excluding touring exhibitions)

Membership

There were a total of 121 members as at the end of June 2015. This includes six Life members. Gallery staff and Board members continue to actively promote Gallery membership. Between 60 and 100 members, sponsors and artists attended each of the official openings of exhibitions held in the reporting period.

| | 30 June 2015 | 30 June 2014 |
|----------------|--------------|--------------|
| Members | 124 | 113 |

Community events

John Pirie Secondary School Festival of Art - The Gallery director presented the prize for the winning art work in the John Pirie Secondary Schools Festival of Art. This was a good opportunity to engage with students and teachers.

Rural Women’s Gathering Port Pirie - The Gallery worked with the Rural Women’s Gathering Port Pirie in a Dedication event held in the Women’s Keepsake Garden, Sunday Dec 14 and arranged afternoon tea for 50 people for this event.

The Port Pirie Regional Art Gallery prides itself on its dedicated group of volunteers. We offer our volunteers varied responsibilities which include visitor meet and greet, and assistance with exhibition changeovers, social and fundraising activities.

We have welcomed two new volunteers into the role of Gallery Assistant. New volunteers participate in orientation and procedures program. On the job training is undertaken and volunteers are offered opportunities to enhance their skills and professionalism further by participating in training programs run by other organisations.

Volunteers

The Gallery continues to rely on the valuable contribution of volunteers on a daily basis, as they provide the first point of contact for visitors entering the Gallery and assist with the changeover of exhibition artworks. Two of our long serving volunteers retired during the year, and there are now six volunteers on a regular roster and another 3 are on a casual or as needs basis.

Volunteer Contribution (Hours and Value)

| | 2014-15 | 2013-14 |
|--|----------------|-----------------|
| Volunteers’ Hours and Value (hours at \$24.50) | 1904 /\$46,648 | 1881 / \$49,109 |
| New volunteers recruited: | 2 | 2 |

SA Regional Award

In September the Port Pirie Regional Art Gallery won the Arts category of the SA Regional Awards in the Yorke & Mid North region. The winners were announced at a gala presentation held at Clare. The award recognised the success of the Gallery in promoting local artists, working with community groups and supporting youth art.

Achievements included:

- Ross Morgan 'Home' - an initiative to involve more young people in the activities of the Gallery and since then our visitations by schools has increased and a young student is now being mentored by Ross;
- WINGS – where will my wings take me? - a collaboration with the Spastic Centres of SA, the 'Hub' Port Pirie which involved people living with a disability working with a professional community artist to produce an exhibition which enabled the artists to explore what it means to be a person challenged daily by their disability and realize the potential in their own ability to express themselves through the Arts;
- TARPARI - a celebration of expression, storytelling, community and connection, a collaboration between Country Health SA Local Health Network Port Pirie Aboriginal Health Team. Aboriginal artists living in the Mid North region of South Australia were given an opportunity to express their culture and connection to the land and to reconnect with their art practice and the Art Gallery.

Board Chair Mike Basley said 'To win this award is amazing! It acknowledges the hard work of the volunteers and staff and the much valued support of our partners and sponsors.'



Image: Mike Basley Board Chair and Jenni Frost Gallery Director with Karen Raffan Brand SA CEO

Goal Three: Existing partnerships are maintained and new partners engaged to ensure the operation of the Gallery into the future.

Build sustainable relationships with key funding providers

Source \$30,000 new sponsorship from groups, business and organisations over 3 years

Work closely with our partners and sponsors

Each year the Gallery seeks funding to effectively keep the Gallery doors open and enable us to get on with the business of 'bringing art to the people and people to the arts'. The Gallery receives significant funding from the Port Pirie Regional Council. This year as part of the three year funding agreement, they contributed \$79,500 and a further \$5,000 towards the Port Pirie Art Prize exhibition. In May 2015, the Council has committed to a further three year funding agreement.

The Gallery also has a funding agreement with Country Arts SA for \$25,000 per annum towards covering the Gallery's operational expenses. Next year is the final year for the both of these agreements and the Gallery has already commenced negotiations for future funding arrangements.

Partner & Sponsor funding

Major funding partners of the Gallery for this year have remained the same. Two new sponsors supported the Port Pirie Art Prize Exhibition and they have shown interest in continuing the relationship.

| | 2014-15 | 2013-14 |
|--|------------------|-----------|
| Partner & Sponsorship funding | \$147,291 | \$144,719 |

Much of the Gallery sponsorship is in-kind support from businesses in the region. During the year, the Gallery entered into a new media relationship with ABC North & West to better support our promotion effort.

The Gallery Board is in final stages of developing a new Sponsor pack which offers a variety of sponsorships ranging from a single or group of exhibitions, art awards and prizes, community events and activities, all with differing investment amounts, from \$10,000 to \$500, in an effort to attract new large and small sponsors.

Donations

Donations for the period to June 2015 of \$2,247 are greater than for the same period last year. The level of donations reflects the appreciation of visitors for the exhibitions.

| | 2014-15 | 2013-14 |
|------------------|----------------|---------|
| Donations | \$2,950 | \$2,491 |

Partner & Sponsor acknowledgement

To acknowledge and promote the valuable support of our partners and sponsors, their logos are now prominently displayed at the entrance to the Gallery and continue to be included on all printed matter, media releases, and invitations. Logos also feature on the Gallery's webpage with links through to sponsoring businesses. Sponsors and partners are acknowledged verbally at exhibition openings.

Television advertising displaying the logos of partners and sponsors was run by Southern Cross for the duration of:

- *Port Pirie Art Prize*
- *Gentle Arts*
- *PPRAG Members*
- *Families, Floods and Furnaces*

Funding partners

Port Pirie Regional Council
\$79,500 – 2014/15
\$5,000 (Sponsorship – Port Pirie Art Prize Exhibition)

Country Arts SA
\$25,000



Media Partner

ABC North and West



Community Partner

Nyrstar, Port Pirie Smelter
\$10,000



Sponsors (In-kind)

Major

Southern Cross Television
\$30,000



Other

Pisani Group Accountants & Business Advisors



Jan Pana Graphic Design



Automatic Print



\$6,014 Total

Other Sponsors

THE PICTURE FRAMER

BELALIE WINES

Exhibition sponsors

Port Pirie Art Prize

The Rotary Club of Port Pirie

Port Pirie Regional Council

Pirie Film Developing Centre

The Hon Geoff Brock, Independent Member for Frome

The Picture Framer



Partner & Sponsor funding

| | 2014-15 | 2013-14 |
|--------------------|------------------|------------------|
| Total Value | \$149,500 | \$144,719 |

Goal Four: The community values the Gallery as a community resource.

Actively promote the Gallery's program and services to ensure community awareness of its role and value

All Gallery activities are promoted by the use of all types of media. Exhibition and community activities are regularly updated on the Gallery Facebook page and website. These forms of media are of particular interest to visitors to Port Pirie and to artists from the region and beyond, to access information on workshops, funding, art prizes and exhibition information.

Media releases are distributed before and during each exhibition. There have been Radio ABC interviews to promote each exhibition.

Communicating with our Community

Social media

Exhibition and community based activities are communicated via the Gallery's Face book page and website. The website is of particular interest to visitors to Port Pirie and to artists from the region and beyond seeking information on workshops, funding, and art prizes.

Website pages viewed continued to increase. Artist Opportunities, What's On and Teachers Resources are the most visited pages.

| | 2014-15 | 2013-14 |
|--------------------|----------------|---------|
| Website page views | 108,894 | 98,735 |
| Facebook likes | 314 | 207 |

Media/Promotions:

The Gallery is increasingly receiving more media coverage. Media highlights include:

- ✓ News reports on GTS BKN Southern Cross Television for:
 - Webs of Time
 - 'From Waste to Wonderful' and Peterborough Papier Mache and Wireworks
 - Port Pirie Art Prize and 'A Brush with Art'.
 - Tough(er) Love
 - Stratum
 - 'A Vision for All' schools exhibition
 - Neil Hann - 'Now and Then'
 - Families Floods and Furnaces – the story of Port Pirie

- ✓ ABC Radio North & West
 - 'Webs of Time' exhibition
 - Tough(er) Love interview with Cindy Durant prior to her Artists talk and workshops for the Tough(er) Love exhibition.
 - Port Pirie Art Prize interview with judges Eleanor Scicchitano and Meg Wilson
 - Brand SA Regional Award and launch of Gallery Exhibition program.
 - Stratum interview with Artist Yvonne East.
 - Glen Skien interview for Mytho-Poetic exhibition
 - Families Floods and Furnaces, Web Story by Petria Ladgrove

- ✓ The Recorder newspaper

- Cultural Precinct - Monthly Column
 - Exhibition opening – Port Pirie Art Prize
 - Gallery Volunteer Christmas celebration 2014
 - 'A Vision for All'
 - Book launch 'Bullion' Families, Floods and Furnaces
-
- ✓ Northern Argus newspaper
 - Port Pirie Art Prize

 - ✓ 5CS radio
 - Community news – each exhibition x 2

 - ✓ Trax FM 105.1 Community Radio
 - Monthly interview about the exhibitions and activities in the Gallery.

 - ✓ Grid HQ
 - Online community calendar and event website Gallery program and events posted each month.

Social media and Website

Exhibition and community based activities are communicated via the Gallery's Face book page and website.

- The Facebook likes have increased from 207 in July 2014 to 314 at the end of June 2015. This is due to more regular posting of activities, exhibitions and artist highlights.
- The Website is of particular interest to visitors to Port Pirie and to artists from the region and beyond, seeking information on workshops, funding, and art prizes.

Website pages viewed continued to increase. Artist Opportunities and Teachers Resources are the most visited pages.

Donations

Donations received during exhibitions and from members were greater than for the previous year.

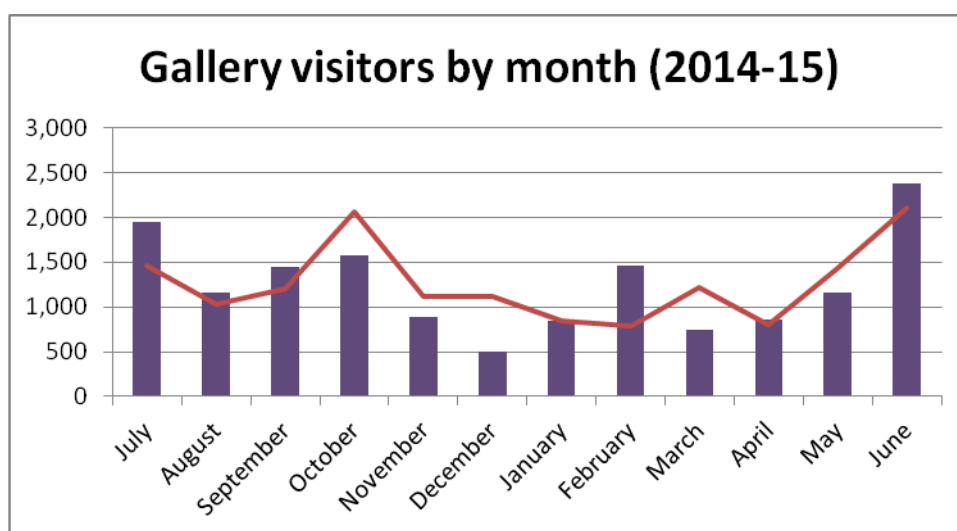
Two Board Members also made donations which were used to purchase a new PA system for use at exhibition openings and other Gallery events. Solver Paints and Home Hardware supplied paint at a discounted price and Board members and Volunteers to paint the Vivienne Crisp Gallery.

| | 2014-15 | 2013-14 |
|------------------|----------------|---------|
| Donations | \$2,950 | \$2,491 |

Grow visitor numbers

The total number of visitors to the Gallery exhibitions was 14,975 which was slightly less than for the previous year with 15,154.

| | 2014-15 | 2013-14 |
|--------------------------------|---------------|---------|
| Visitors to the Gallery | 14,975 | 15,154 |



Visitors by Exhibition

Visitors consistently enjoy the Port Pirie Art Prize Exhibition and the Gentle Arts/Members Exhibitions and also appreciated local art of the Waste to Wonderful exhibition.

The Tough(er) Love exhibition was also of interest as some of the participating artists had a connection with Port Pirie, such as Siv Grava as a past Port Pirie Art Prize winner.

Other visitors

- Clients of the Port Pirie Country Health Day Care program attended the Art Gallery for morning tea and to view the Port Pirie Art Prize Exhibition.
- Residents of the Crystal Brook Hospital Day Care program visited the Gallery to view the Port Pirie Art Prize Exhibition.

Goal Five: Technology enhances the operation and promotion of the Gallery and its services

Due to financial constraints, there have not been any achievements in this period.

Keep up to date with new media and acquire appropriate technology

Increasingly digital technology facilities are being used to compliment the presentation of an exhibition. This includes video and television images to tell the stories behind the creation of the exhibition artworks and the motivation of the artists.

Goal Six: Staff and Volunteers use their skills and knowledge to achieve the Gallery's purpose

Our Staff and Volunteers bring to the Gallery diverse skills from a range of backgrounds, experiences and contacts. The Gallery is a member and the Gallery Director is a regular participant in meetings and development activities of the Regional Galleries Association of SA.

The Gallery Director attended the 'Bringing it All Together' seminar in Whyalla, to discuss guidelines for arts and mental health projects and also participated in a road trip visiting other regional galleries in the Adelaide Plains, Barossa, Mid North and Murraylands regions of SA.

The two new volunteers completed a Gallery induction and have been involved in the revision of the Gallery operations manual.

Ensure staff can make best use of their skills and knowledge and acquire necessary new skills

Our Staff bring to the Gallery diverse skills from a range of backgrounds, experiences and contacts. The Gallery is a member and the Gallery Director is a regular participant in meetings and development activities of the Regional Galleries Association of SA.

Both staff attended the Expanding Horizons forum hosted by Country Arts SA. They were inspired by the enterprise and energy of strategies used by other arts organisations. How positive outcomes from grass roots ideas and how the arts can benefit the community.

Ensure a robust volunteer group

The Port Pirie Regional Art Gallery prides itself on its dedicated group of volunteers. We offer our volunteers varied responsibilities which include visitor meet and greet, and assistance with exhibition changeovers, social and fundraising activities.

The Gallery continues to rely on the valuable contribution of volunteers on a daily basis, as they provide the first point of contact for visitors entering the Gallery and assist with the changeover of exhibition artworks. Following the retirement of three long serving volunteers, there are now seven volunteers on a weekly roster and another five are on a casual or as needs basis.

Volunteer Contribution (Hours and Value)

| | 2014-15 | 2013-14 |
|--|----------------|-----------------|
| Volunteers' Hours and Value (hours at \$24.50) | 1904 /\$46,648 | 1881 / \$49,109 |
| New volunteers recruited: | 2 | 2 |

Volunteers fulfil the following roles:

- Gallery Assistant: to provide visitors with appropriate Gallery Exhibition information, light administrative support.
- Weekend Assistant: To provide visitors with appropriate Gallery Exhibition information and maintain security of the Gallery and Exhibitions.

- Changeover Assistant: to provide assistance to Gallery staff, artists and curators to install and uninstall exhibitions.
- Functions Assistant: to provide assistance to Gallery staff at openings, fundraising events, artists talks and public program functions.

Volunteers who attend the Gallery on weekends and public holidays receive an honorarium so we can confidently have the Gallery open 7 days a week.

We are actively seeking new volunteers. New volunteers undertake police checks and participate in a brief orientation and procedures program. On the job training is undertaken and volunteers are offered opportunities to enhance their skills and professionalism further by participating in training programs run by other organisations.

Goal Seven: The Gallery has good corporate governance.

Sound planning to ensure everyone knows what they need to do

During the year the Action Groups of Policy and Sponsorship were both busy. The Sponsorship Group is developing sponsor packs in an effort to increase this funding stream.

The Policy Action Group reviewed and the Board adopted the following policies:

- Exhibitions and the Staff – Time in Lieu policies.
- New policies included Risk management and Use of computer equipment.

Transparent financial record keeping

The Board receives monthly financial reports to monitor the financial position and reviews the budget three times during the year.

The Pisani Group provides support to ensure that the financial records are maintained in a proper manner. They review the records at the end of each quarter. An independent audit is conducted annually and the report is included as part of the Gallery Annual Report.

The financial performance for the 2015 financial year improved slightly on the previous year.

The Statement of Income and Expenses for the year shows an operating loss of \$2,571 and after taking into account the disposal of assets, a loss of \$4,421, which follows from a loss of \$6,454 last year. Although the financial result is an improvement on the last year, the focus of the gallery is to make a small surplus to provide some base funding for the next year.

The Port Pirie Regional Council and Country Arts SA continued as our main supporters with three year funding agreements. We also received a grant from Country Arts SA to support the Morgan workshop and a Community Benefit grant to purchase a portable forklift to make the shifting of artworks and crates by volunteers. Sponsorship, Membership and Donation income all increased, so total income was more by almost \$9,000 than for the previous year.

There were no major or unusual operating expenses during the year though many showed some increase when compared to last year. Last year the Board commenced to record the depreciation of assets each year, to reflect an allocation of these purchases in the statements. A review of assets was taken and several small assets were disposed as they were not able to be repaired for use.

The first year of detailed expense recording has now been completed which will give us a firm view of the likely total cost of the different types of exhibitions, either local or touring, to assist with the planning of the exhibition program.

Collection conserved, maintained and documented

The Art Collection is a substantial and culturally important collection which has been acquired over many years through the Port Pirie Art Prize in partnership with the Port Pirie Regional Council. The Gallery prepares reports on the condition of the artworks for purposes of collection management, risk assessment and insurance. The Gallery Collection contains 121 artworks that have been donated by members, individuals and artists.

Acquisitions

There were no additions to the collections during the year. The Gallery Board of management meets generally on a monthly basis and there were also meetings of the Policy and Sponsorship Action Groups held during this period.

Exhibitions held from July 2014 to June 2015

Webs of Time and From Waste to Wonderful

27 June to 27 July 2014

Visitors – 2,043

Donations \$301

Webs of Time

Vivienne Crisp Gallery

Webs of Time Lace exhibition featuring the nationally significant collection of lace by Karen Blum, who was a resident of Port Pirie up until her death in 2013.

In conjunction with the International Congress of Lace which was held in Adelaide, two bus tours from the Congress visited Port Pirie, one of five Lace exhibitions that were held in Adelaide and regional centres as part of the Congress.

Also on display was work of the members of the Port Pirie Embroiderers Guild, who displayed their recent lace projects and examples of the different types of lacework, much to the delight and interest of visitors.



Image: Lace detail

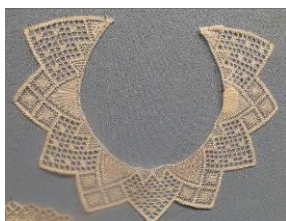


Image: Karen Blum lace



Image: Tricie Hall 'Chewing the Fat' From Waste to Wonderful

From Waste to Wonderful

Flinders Gallery

'From Waste to Wonderful' from the artists of the Peterborough Papier Mache and Wire Works. People, animals, birds and fantasy creatures created with simple tools, wire and papier mache. This display was a surprising expression of the imagination.

The exhibition was a real winner, especially in the school holidays. Visitors young and old marvelled at the creativity and imagination of the artists using every day materials to make the sculptures, many of which were **life size**.

Tough(er) Love

1 August to 7 September 2014

Visitors – 1,526

Donations \$172

Sales - 4

Tough(er) Love – Art from the Eyre Peninsula. A Country Arts SA Touring exhibition.

Tough(er) Love presented new work by 12 Eyre Peninsula artists which reflected the cultural and geographic diversity of the West Coast's art communities (including Indigenous and non-Indigenous artists working out of larger population centres including Port Lincoln, Whyalla and Ceduna as well as others working in isolation or smaller communities.)

This exhibition attracted many local visitors familiar with the work of these artists particularly Siv Gravia, a past Port Pirie Art prize winner.

The exhibition Curated by John Neylon who supported the artists in reflecting on and extending their practice to create bodies of works which made statements about a commitment to being an artist. From this process a remarkable story has emerged, one that speaks about the centrality of art within the cultural life of this unique place.

A key aspect of the project was to give regional artists the opportunity of having their work showcased in a major city gallery. Another was to support artists in developing a body of work, which expressed their ideas and aspirations as artists.

Exhibition support materials included a very comprehensive education resource kit.



Image: Siv Gravia 'Terrain 3'



Images: Visitors enjoying the Tough(er) Love exhibition

Port Pirie Art Prize

13 September to 12 October 2014

Visitors - 1,620

Donations - \$106

Sales - 3

This was our 19th annual exhibition held in conjunction with the Port Pirie Regional Council that showcases the diverse range of talent from the Southern Flinders and Mid North regions, across SA and beyond.

The art prize attracted 112 entries from 56 artists, both local and interstate. The number of entries was significantly higher than the previous year and one of the highest ever.

About 100 family, friends, members and artists attended Art Prize Opening and Presentation of Prizes. The exhibition was formally opened by Mayor Brenton Vanstone. Entertainment by Chloe McBride and Hannah Gray, vocal soloists and Josh McBride, guitar and vocals was enjoyed by all.

Prize categories:

- Open Prize - \$3,000 sponsored by Port Pirie Regional Council
- Southern Flinders Prize - \$1500 sponsored by the Rotary Club of Port Pirie
- Photography Prize \$500 - sponsored by Pirie Film Developing Centre
- Youth Encouragement Award - \$250 sponsored by the Hon. Geoff Brock
- Clan Rodda Award - \$1000 sponsored by Port Pirie Regional Art Gallery

There were two new prize sponsors for this year. The Rotary Club of Port Pirie sponsored the Southern Flinders Prize and the Pirie Film Developing Centre sponsored the Photographic Prize.

The judges for this year were Eleanor Scicchitano, Visual Arts Coordinator with Country Arts SA and Meg Wilson, co-director of FELTspace Gallery, Adelaide

Winners:

- Open Prize - Harry Sherwin, Watervale 'Blue Room'
- Southern Flinders Prize – Neil Hann, Port Germein 'Telowie Reflections'
- Clan Rodda Award – Alana Lawson, West Hindmarsh 'Portrait #2'
- Youth Encouragement Prize – Lucy Wood, Port Pirie 'Still Art'
- Photographic Prize – Lindall White, Port Pirie 'A Shearers Curtain'

The Port Pirie Art Prize was included in the Flinders Ranges 'A Brush with Art Festival'. This event celebrates art, artists and art galleries in our region, as far north as Leigh Creek and east to Gladstone, 16 galleries that all showcased art and artists of the Flinders Ranges.



Image: Judges in front of the winning entry 'Blue Studio'



'Blue Studio' – Harry Sherwin

Gentle Arts and Gallery Members' Exhibition
Visitors - 1,138

15 October to 2 November 2014
Donations: \$65

Gentle Arts – Embroiderers Guild of Port Pirie

Vivienne Crisp Gallery

Ever popular, and always beautiful, this exhibition displayed the remarkable skills of this highly talented group.

The pieces on display included patchwork, delicate lace and fine point embroidery. Members of the Guild attended the exhibition each day so that visitors could chat to them about their work.



Image: Work by Port Pirie Embroiderers' Guild members

Port Pirie Regional Gallery Members' Exhibition

Flinders Gallery

The membership of Port Pirie Regional Art Gallery includes many talented local artists. This was their opportunity to exhibit as a group – a diverse and inspiring exhibition.

The exhibition attracted 37 entries from 14 members for a very diverse and exciting exhibition.



Image: Meredith Mayr 'Lake Argyle'



Image: de Villiers 'Taste and See'

Stratum

7 November to 14 December 2014

Visitors – 962

Donations: \$52

This exhibition featured work by Yvonne East, combining traditional drawing and painting techniques with multimedia installation to investigate the physical and psychological connection with the Australian landscape.

Acknowledged in folklore, fiction and film the Australian landscape has an extraordinary influence on its inhabitants. This work interrogates the psyche of land and the unique dissonance created by the comparison of the urban and rural. The body, mind and soul are represented by subjects caught in the stasis of what may be religious epiphany.

Charcoal drawings of the human figure become a metaphor for the tension between the internal mind and how we relate to the 'outside' environment and community.

A Country Arts SA touring exhibition



Image: Yvonne East 'Luna'

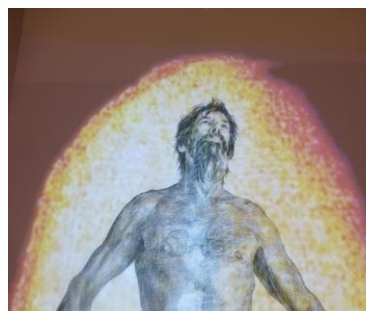


Image: Yvonne East 'Still Image'

Warakurna

19 December 2014 to 26 January 2015

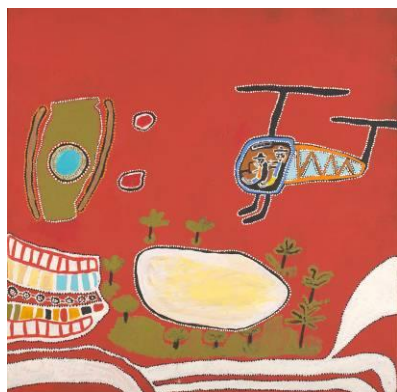
Visitors – 795

Donations: \$38

Warakurna - *All the Stories Got into Our Minds and Eyes* is an exhibition of contemporary paintings and sculptures that document an emerging new art movement which combines familiar symbols and dots with a more figurative style to re-create scenes of everyday life.

The Western Desert community of Warakurna, is a community that is nestled in the Rawlinson Ranges near the West Australian/Northern Territory border approximately 330klms west of Uluru, near the junction of the Grand Central Road and the Gunbarrel Highway.

Port Pirie was privileged to have this exhibition from the National Museum of Australia.



Helicopter ride with Brooksy



A Vision for All

30 January to 22 February 2015

Visitors – 1609

Donations: \$20

‘A Vision for All’ preparing our community for a successful future

‘A Vision for All’ is a photographic exhibition reflecting the aspirational values of our Education Sites. Persistence, Respect, Responsibility and Confidence

Preschools, Primary schools, Mid North Education centre and the John Pirie Secondary School have worked with students, families and the community to identify four qualities that underpin success in learning and life. These qualities are:

This exciting exhibition was opened by the Hon Geoff Brock Independent Member for Frome on Friday 30 January @ 6pm along with guest speakers from the Pirie partnership



Mytho-Poetic

Visitors – 794

Donations: \$23

Next in the Gallery! ‘MYTHO-POETIC’, an exhibition of artist books, collages and etchings by Queensland artist Glen Skien – evocative, mythical, textural! An immersive experience!

The exhibition interrogates the human condition with assemblages and installations that bring to life social histories and vexing questions of Australian identity, place and myth. Skien’s etching practice is the platform for his work, with underlying narratives utilising the symbolic imagery of maps, postcards, books and ephemera.

MYTHO-POETIC is organised by Gympie Regional Gallery and toured by Museum & Gallery Services Queensland



Australian Government
Visions of Australia

This project has been assisted by the Gordon Darling Foundation and the Australian Government through the Australia Council for the Arts, its arts funding and advisory body.

Mytho-Poetic



Archive of the country detail



object poem II detail



*miscellaneous
Book 1 detail*

Now and Then

Visitors – 1960

Donations: \$135.60

Germein Art Focus consists of eight established artists who, having met through their association with the Port Pirie Regional Art Gallery, decided in 2007 to exhibit as a cooperative group.

The founding members are; Barbara Looby, Harm Folkers, Neil Hann, Anna Herbut, Marek Herbut, Jan Pana and Clan Rodda. Ineke van den Hout joined the group in 2013.

Their paintings and drawings not only draw upon their surroundings in the Upper North and Flinders Ranges, but also reflect heritage and cultural influences from Poland, Holland, Japan, Africa and the Solomon Islands.



Mother Mary Hodegetria, Anna Herbert



Clan Rodda, Dancer moving



detail Lunch on the grass, Marek Herbert

Families, Floods and Furnaces

Visitors until June 30 - 2382

Donations \$1,131.80

A photographic exhibition of the Smelter and Port Pirie's rich history in partnership with Nyrstar and curated by Kirstie Jamieson

This exhibition was a treasure trove of historical discoveries that have been unearthed by Nyrstar as part of its Families, Floods and Furnaces - the Story of Port Pirie"

The exhibition which in conjunction with the launch of "Bullion", a history book commissioned by the Smelter to celebrate its 125 anniversary, covering the period of Port Pirie's rich history from 1910- 1936, a period of time that is vastly unknown.

Through a selection of images covering this challenging and remarkable period of Port Pirie's communities history, 'Families, Floods and Furnaces- the Story of Port Pirie' took everyone on a journey of discovery and surprise.



Newman trucks early 1920's



Zeipe's House



Opening event 'Families, Floods and Furnaces'